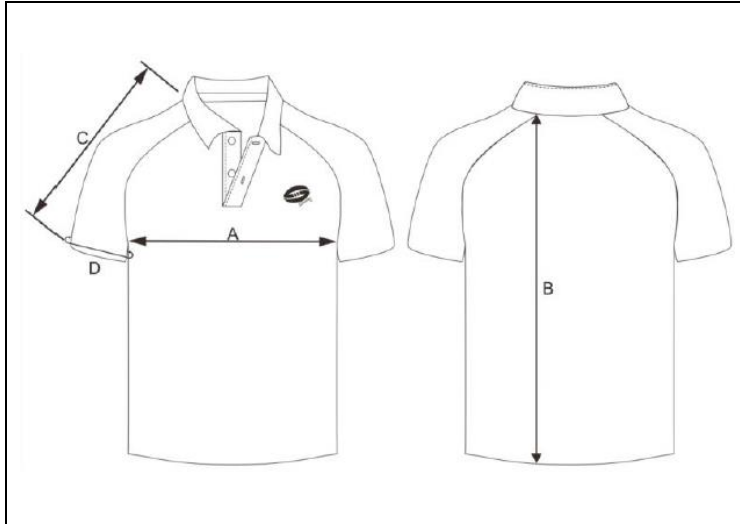




COASTAL DISTRICT 10 to 12 YEARS SCHOOL SPORT
REPRESENTATIVE SIZING

◆ **REPRESENTATIVE POLO SHIRT**



SIZING INFORMATION:

TIP – Grab a garment that you are comfortable with the fit of, and measure the dimensions when it is laid out flat. (See diagram on left.)

½ Chest Measurement: Taken from armpit to armpit.

Length Measurement: Taken from the high point on the back along the centre line, to the hem at the bottom of the garment.

SIZES	Size 8	Size 10	Size 12	Size 14	XS	S	M
MEASUREMENT DETAILS							
(A) Half Chest	420	440	460	480	515	540	560
(B) Clothes Length	540	580	605	635	670	690	710
(C) Sleeve Length	295	305	325	350	325	345	365
(D) Cuff	310	330	340	350	340	355	370

◆ **REPRESENTATIVE HATS & SWIMMING CAPS**

- All Coastal District hats and swimming caps are **“One Size Fits Most”**.